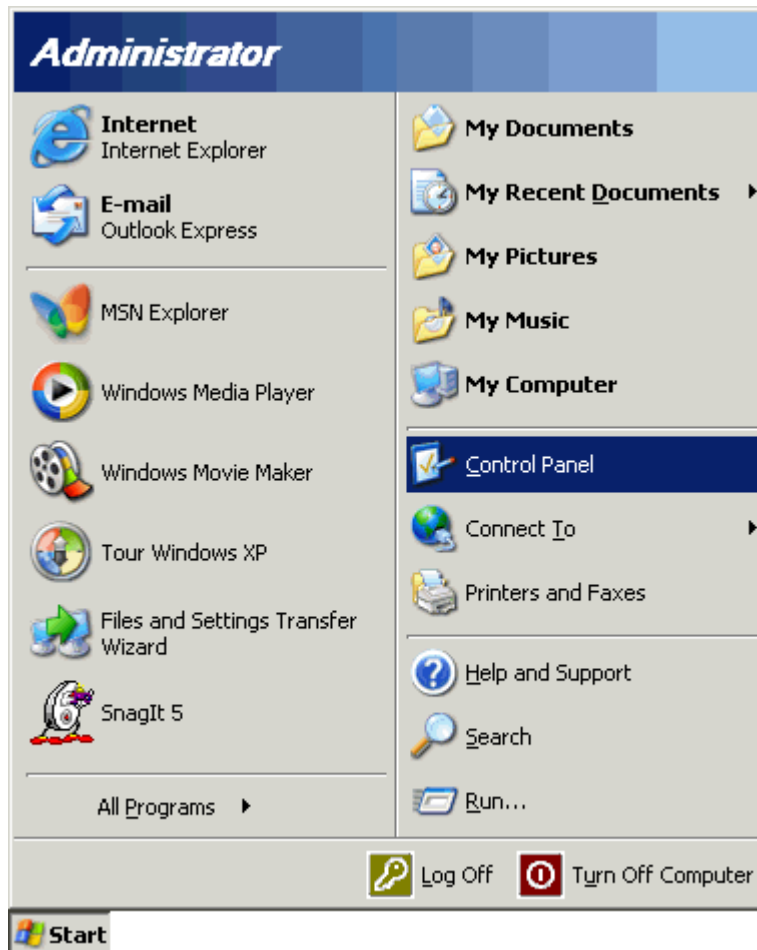


## Windows XP Dial-up Networking

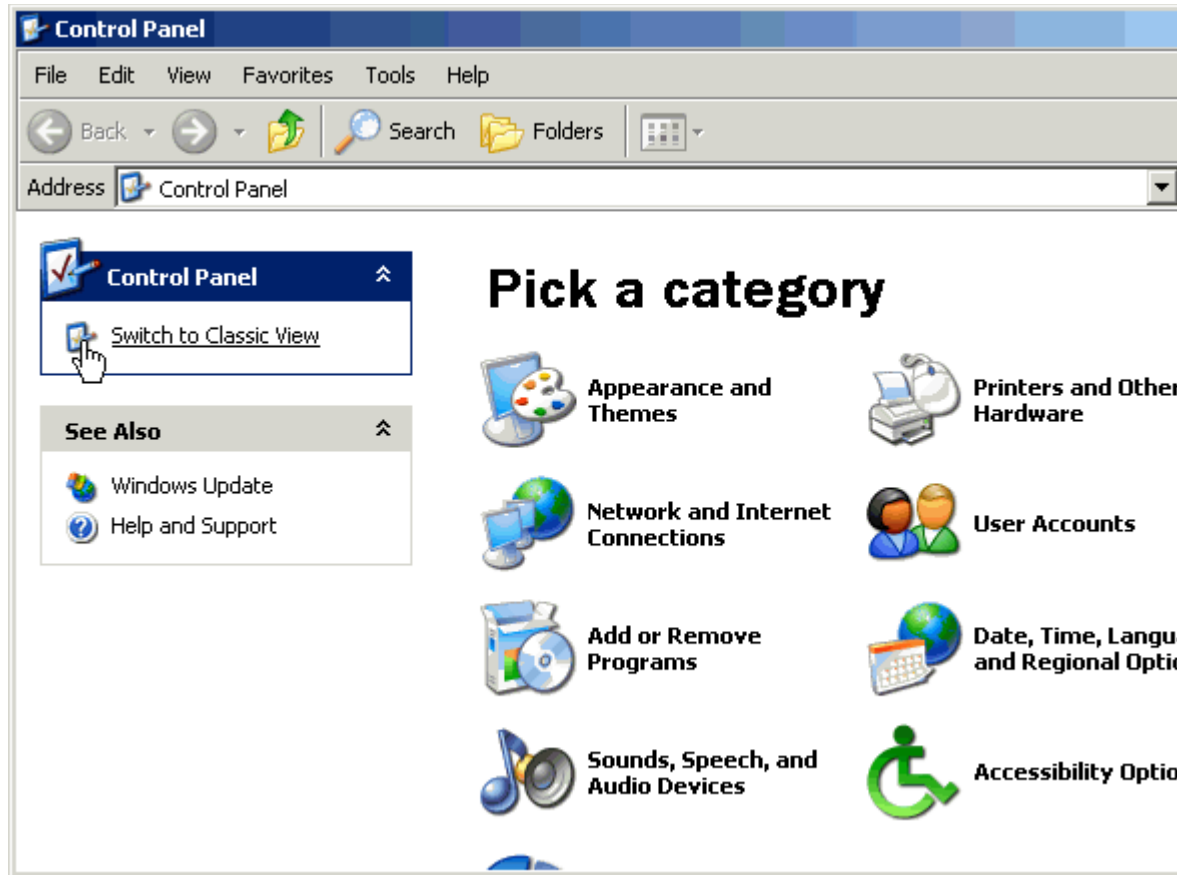
To get online with ComputerOne using your Windows XP, follow these instructions. These are simple instructions that will work with most, but not all, Windows XP PCs.

### How to create a dial-up networking connection with ComputerOne Online:

1. From the **Start** menu, choose **Control Panel** icon.



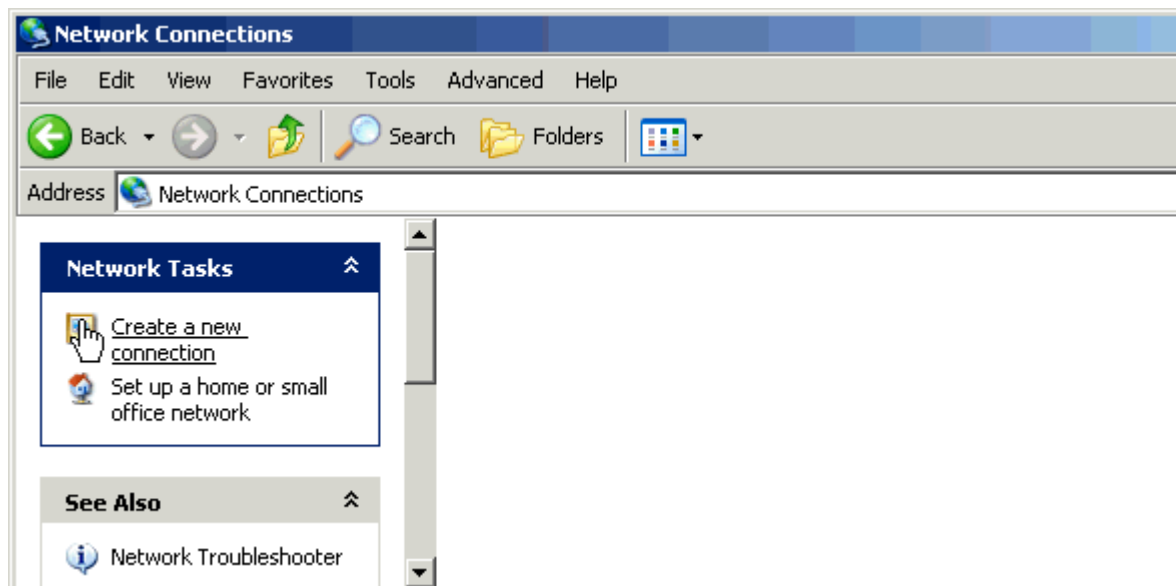
2. Click the **Switch to Classic View** icon.



3. Double click on **Network Connections** icon.



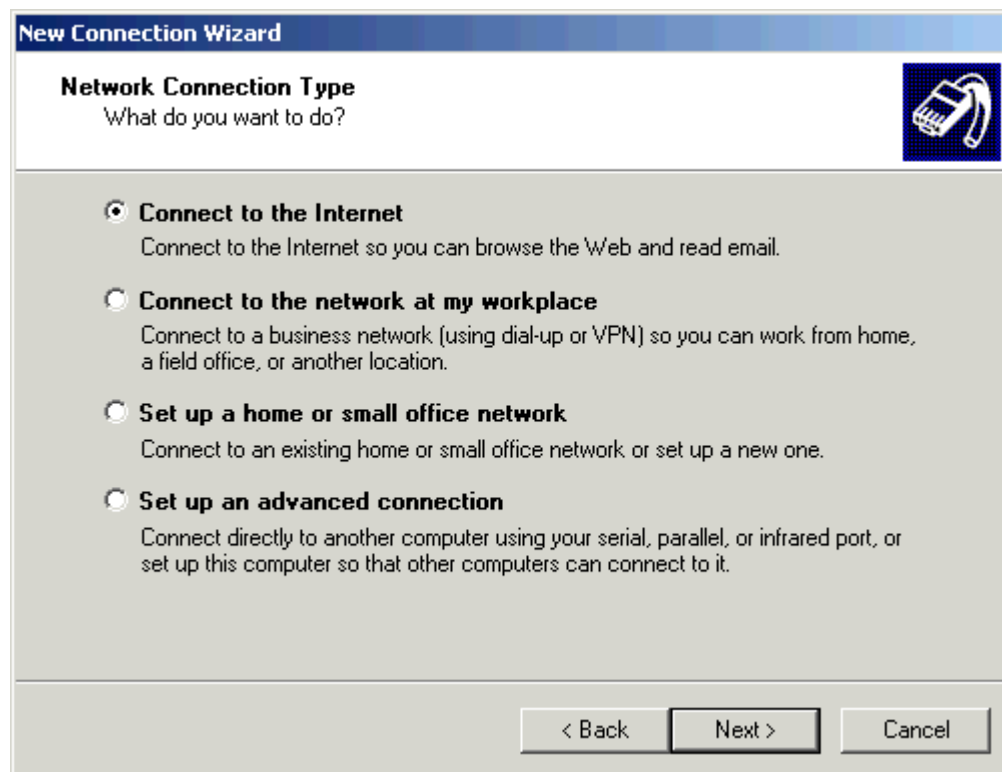
4. Click the **Create a new connection** icon then click Next.



5. Click the **Next** button.



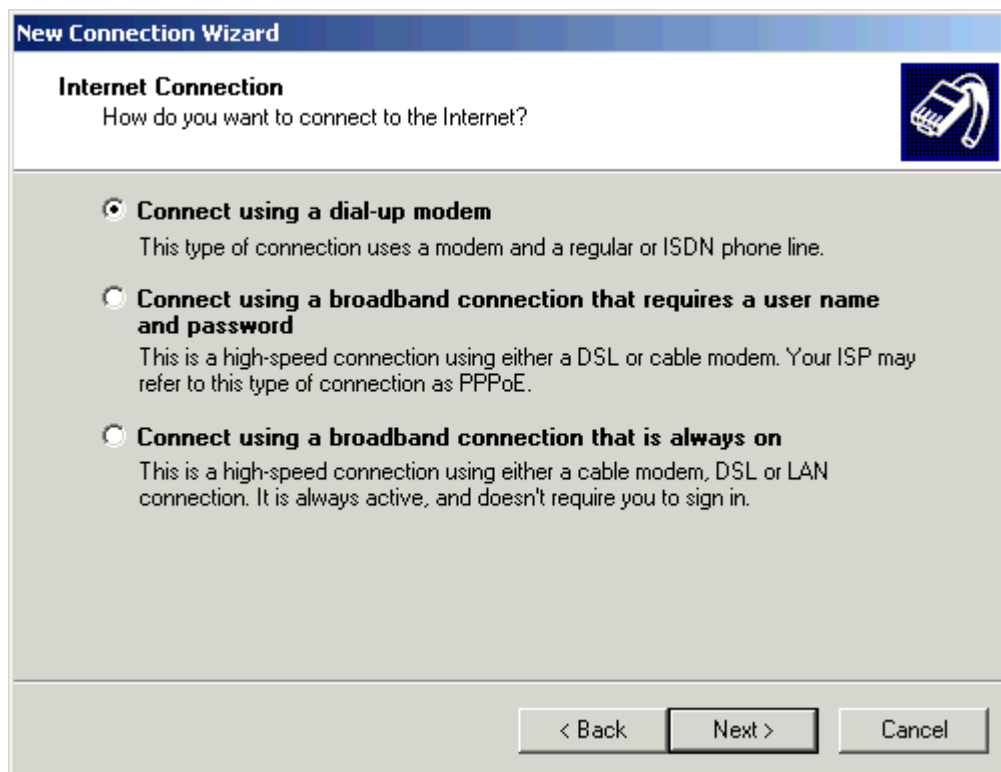
6. Select **Connect to the Internet** then click Next.



7. Select **Set up my connection manually** then click Next.



8. Select **Connect using a dial-up modem** then click Next.



9. In the **ISP Name** field, type a name to identify your connection (ie. **ComputerOne**) then Click Next.



**New Connection Wizard**

**Connection Name**  
What is the name of the service that provides your Internet connection?

Type the name of your ISP in the following box.

ISP Name

ComputerOne

The name you type here will be the name of the connection you are creating.

< Back   Next >   Cancel

10. In the **Phone number** field, type your local access number exactly as it needs to be dialed, then cl

Local Access Numbers are as follows:

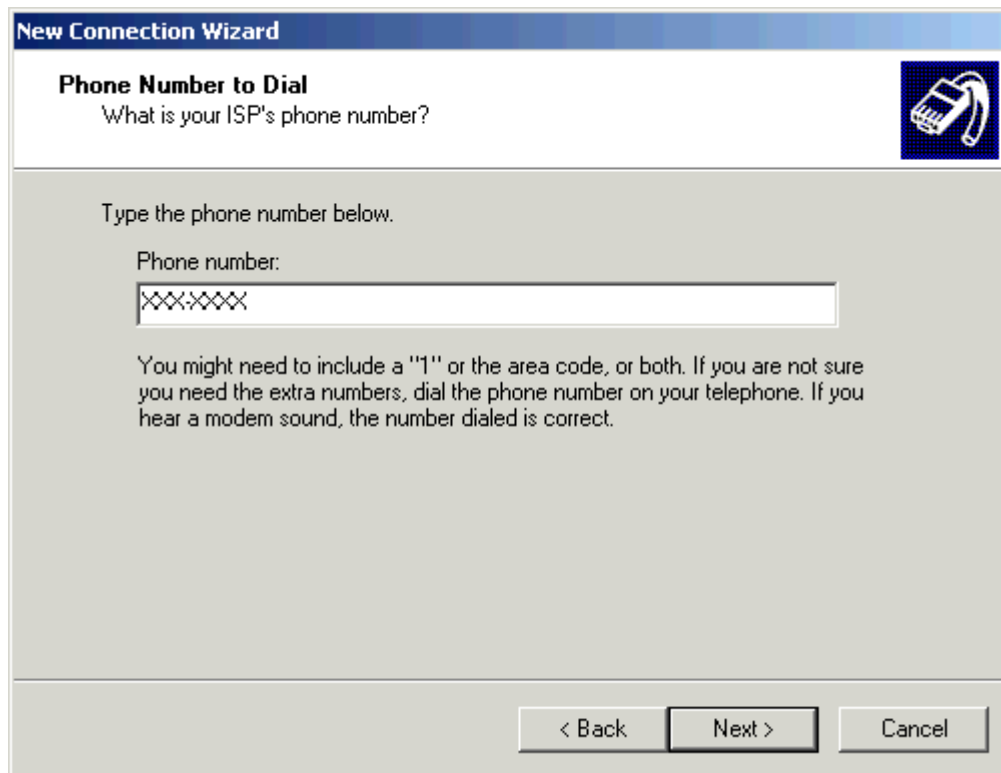
Augusta / N. Augusta

706-821-0044

706-262-1008

Lincolnton/Apling/Thompson

706-541-1950



**New Connection Wizard**

**Phone Number to Dial**  
What is your ISP's phone number?

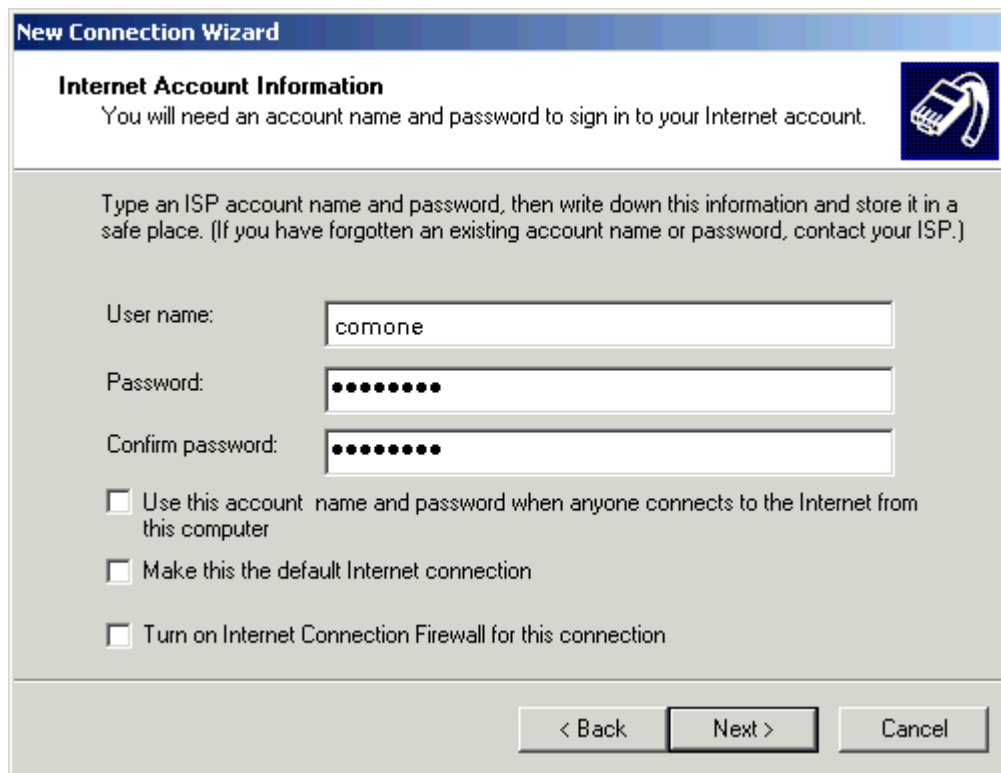
Type the phone number below.

Phone number:  
XXXXXXXXXX

You might need to include a "1" or the area code, or both. If you are not sure you need the extra numbers, dial the phone number on your telephone. If you hear a modem sound, the number dialed is correct.

< Back   Next >   Cancel

11. In the **User Name / Password** field, type your username (example: comone) and Password.
12. Check the box **Make this the default Internet Connection** then click Next.



**New Connection Wizard**

**Internet Account Information**  
You will need an account name and password to sign in to your Internet account.

Type an ISP account name and password, then write down this information and store it in a safe place. (If you have forgotten an existing account name or password, contact your ISP.)

User name: comone

Password: ●●●●●●●●

Confirm password: ●●●●●●●●

Use this account name and password when anyone connects to the Internet from this computer

Make this the default Internet connection

Turn on Internet Connection Firewall for this connection

< Back   Next >   Cancel

13. Check the box **Add a shortcut to this connection to my desktop** if you wish to have a shortcut to your desktop, then click Finish.



14. Close all windows, go to **Start** then choose **Connect To** then click on **ComputerOne** or whatever your connection, or click on the shortcut on your desktop to establish a connection.

Please feel free to call us with any problems that you have while setting up your internet access.